

Alton Estate Renewal Plan Engagement and Co-Design



Splash of Colour

Introduction

The Splash of Colour event took place on 29th March 2025 to bring together the diverse community of Alton to get creative. The event consisted of three co-design workshops that the community could get involved with, which will inform various artwork in the area. Firstly, the wayfinding workshop was designed to allow community to tell us what made Alton, Alton? Using a range of shapes, colours and lettering.

The second co-design workshop centred around creating community art that will inform a permanent mural that will be displayed in the linkway leading to the leisure centre. This activity was facilitated by a number of artists, who guided the development of fourteen murals that were painted by both adults and children from the community. The boards created during this event will be displayed temporarily in the linkway to showcase the artwork to the public.

The last workshop, also facilitated by artists, focused creating plaster reliefs that will be used to inform the design for artwork that will act as a gateway to Alton. The plaster reliefs will be displayed temporarily along the linkway with the murals.



Workshop Boards

Wayfinding

Create a sign for Alton using the questions below:

What makes Alton, your Alton?

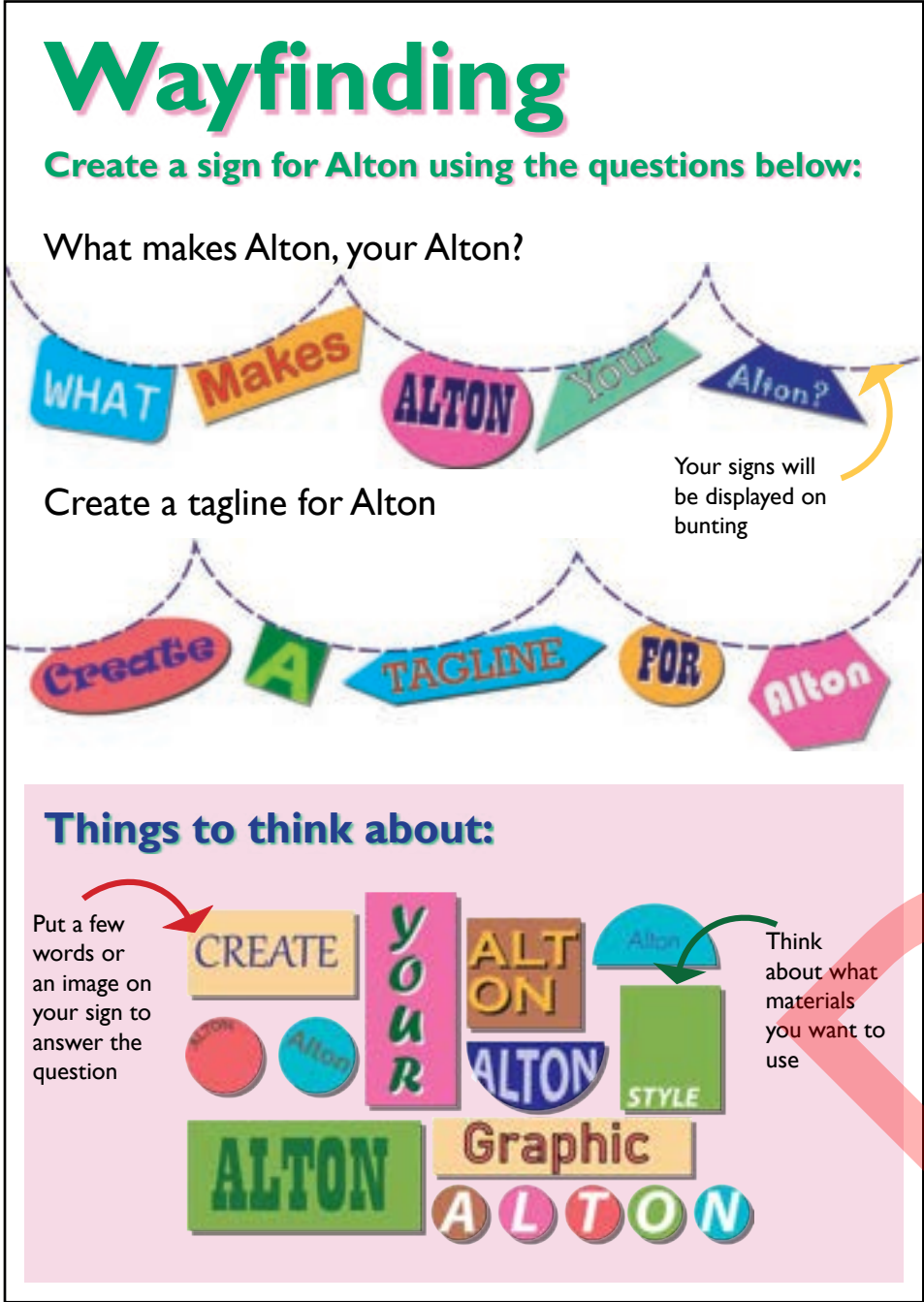
Create a tagline for Alton

Your signs will be displayed on bunting

Things to think about:

Put a few words or an image on your sign to answer the question

Think about what materials you want to use

The board features two examples of bunting. The first bunting has flags with the text 'WHAT Makes ALTON Your Alton?'. The second bunting has flags with the text 'Create A TAGLINE FOR Alton'. Below these, there are several graphic design prompts for 'ALTON' in various styles, including 'CREATE YOUR ALTON', 'ALTON STYLE', 'ALTON Graphic', and 'ALTON' in a bubble font.

Community Art

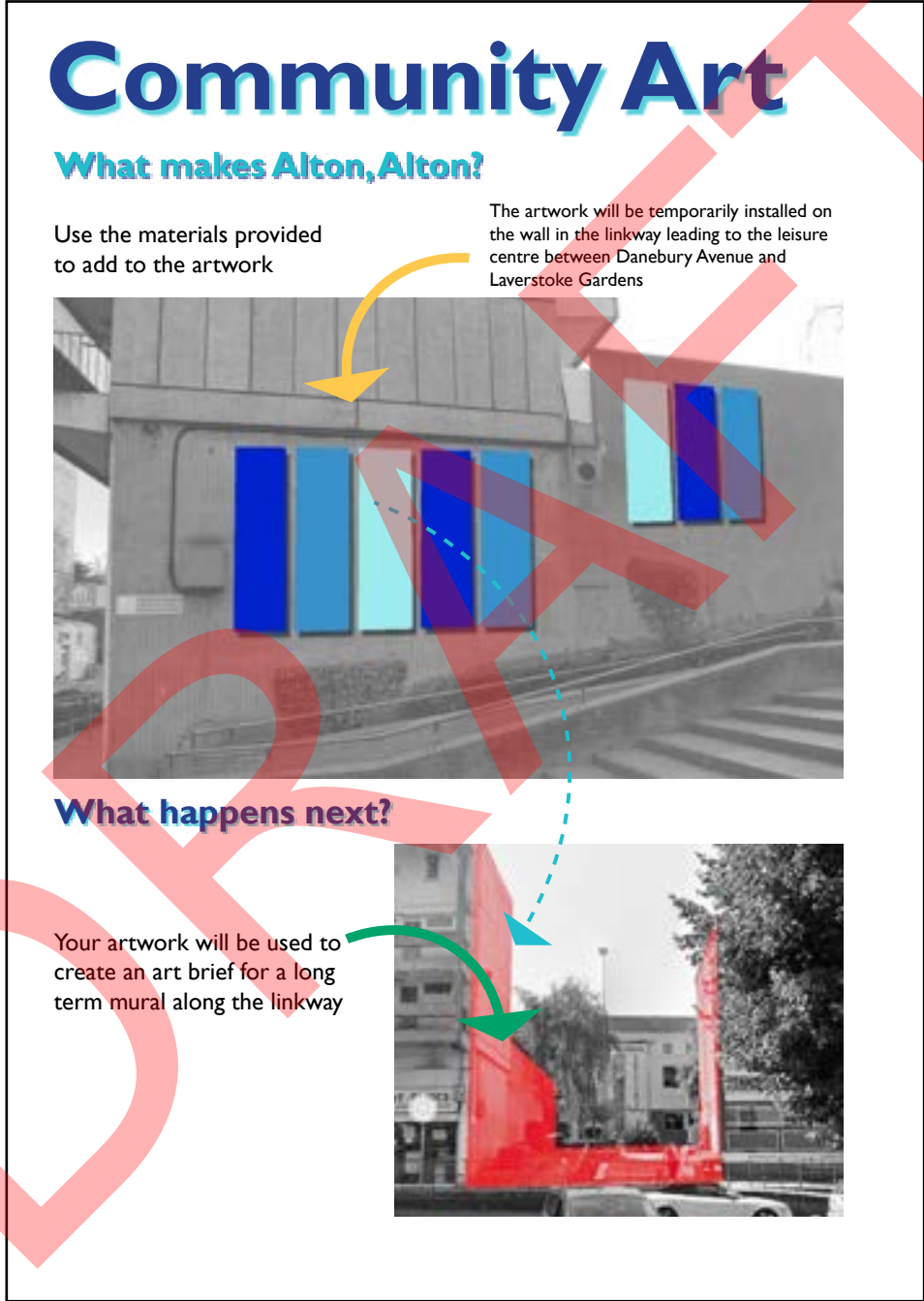
What makes Alton, Alton?

Use the materials provided to add to the artwork

The artwork will be temporarily installed on the wall in the linkway leading to the leisure centre between Danebury Avenue and Laverstoke Gardens

What happens next?

Your artwork will be used to create an art brief for a long term mural along the linkway

The board shows a photograph of a wall with several vertical rectangular panels in different colors (blue, light blue, purple, teal). Below this, a photograph shows a red sculpture or mural on a wall. Arrows indicate the flow from the materials to the temporary installation and then to the long-term mural.

Gateway Artwork

Where is Alton?

1. Sculpt your design into a slab of clay
2. Build a wall out of clay around your relief and pour plaster over the clay relief
3. Once the plaster is set it can be removed revealing a reverse image of the clay relief.
4. You can now add colour to your plaster relief using paint, ink or pigment.

What happens next?

Your artwork will be used to inform a gateway artwork sculpture for Alton

Danebury Ave Roehampton Library

The board includes a four-step process for creating a clay relief sculpture. Step 1 shows a person sculpting a design into a slab of clay. Step 2 shows a wall of clay being built around the relief. Step 3 shows the plaster being removed to reveal the reverse image. Step 4 shows the finished plaster relief being colored. Below this, a photograph shows a street scene with a red sculpture on a wall, with arrows indicating the location between Danebury Ave and Roehampton Library.

These boards where installed on the day to show people what the activity was, in addition to the workshop facilitators.

Wayfinding - Event Day



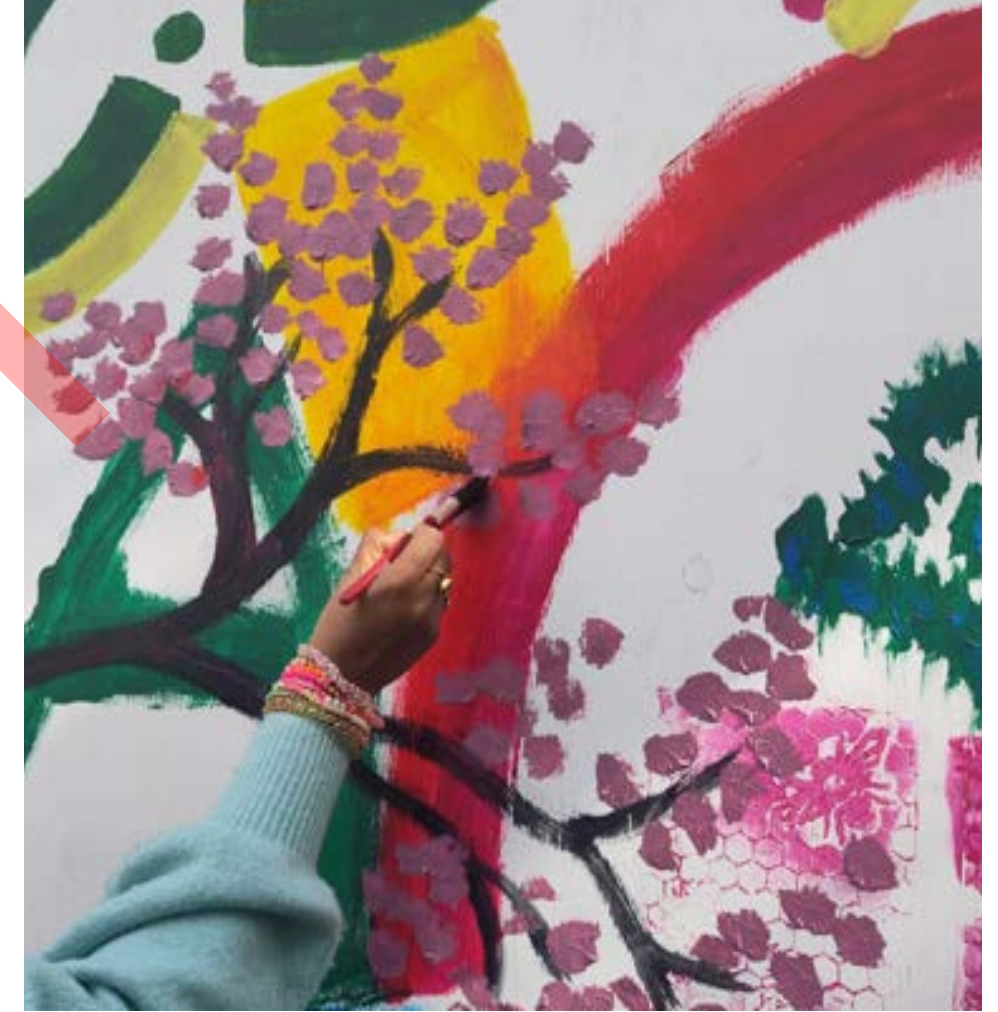
Wayfinding - Workshop Results



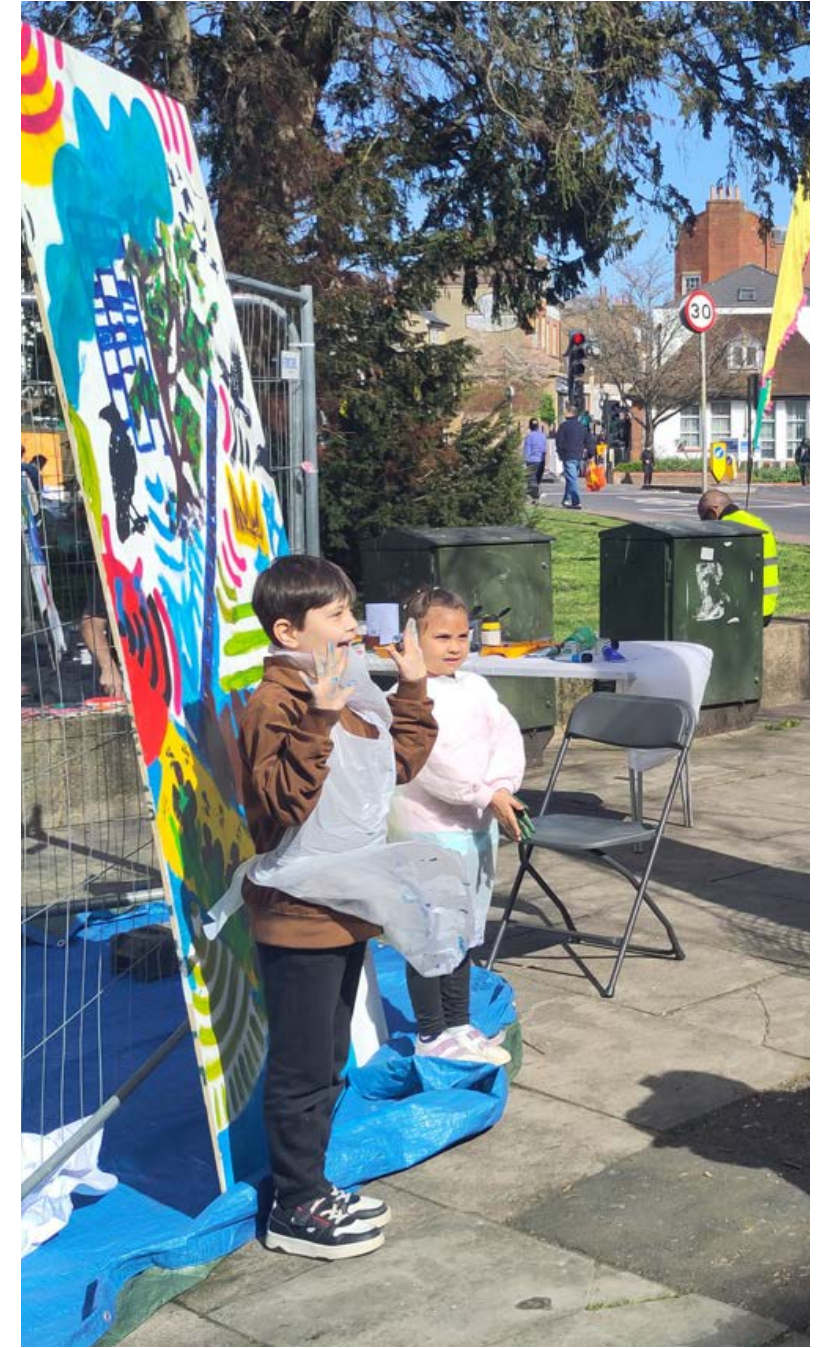
Community Art - Event Day



Community Art - Event Day



Community Art - Event Day



Community Art - Finished boards



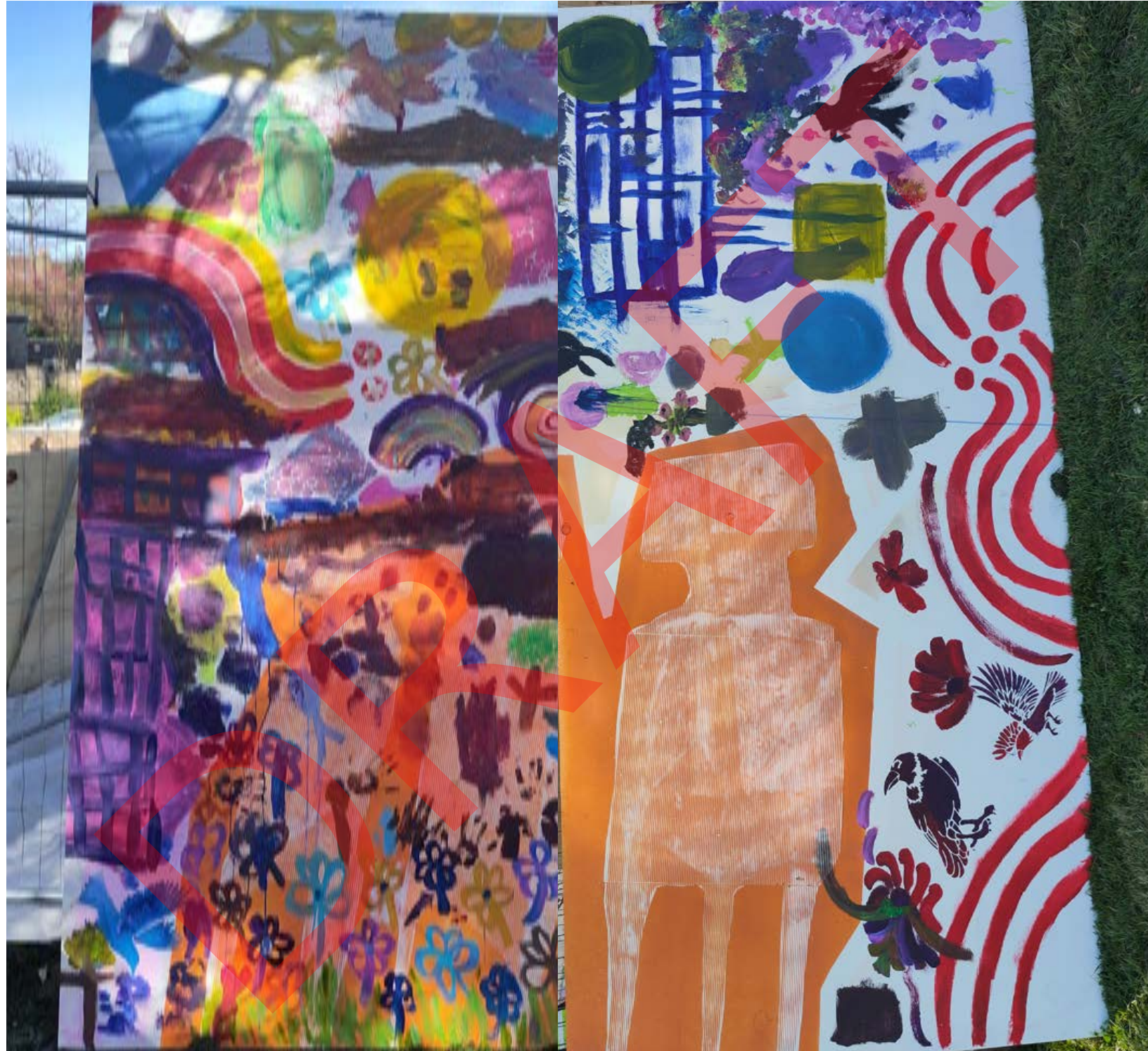
Community Art - Finished boards



Community Art - Finished boards



Community Art - Finished boards



Community Art - Finished boards



Community Art - Finished boards



Gateway Artwork - Event Day



Gateway Artwork - Finished Tiles



Gateway Artwork - Finished Tiles

