

Gateway for the Alton

New Community Hub - local landmark building that is highly flexible and adaptable to meet the needs of local people today and in the future.

New Homes - A minimum of 40 Low Cost Rent homes with a mix of 1, 2, 3 and 4 bed apartments, including wheelchair accessible homes, creating a balanced community that offers choice and homes for life.

High Quality Landscape & Play Space - creatively reworking the site levels to provide a range of spaces for residential amenity and play space, some of which will be accessible to all and benefit the wider community.

Improved Landscape - A new community courtyard space in the centre of the site, alongside enhancements to the surrounding streets and spaces.



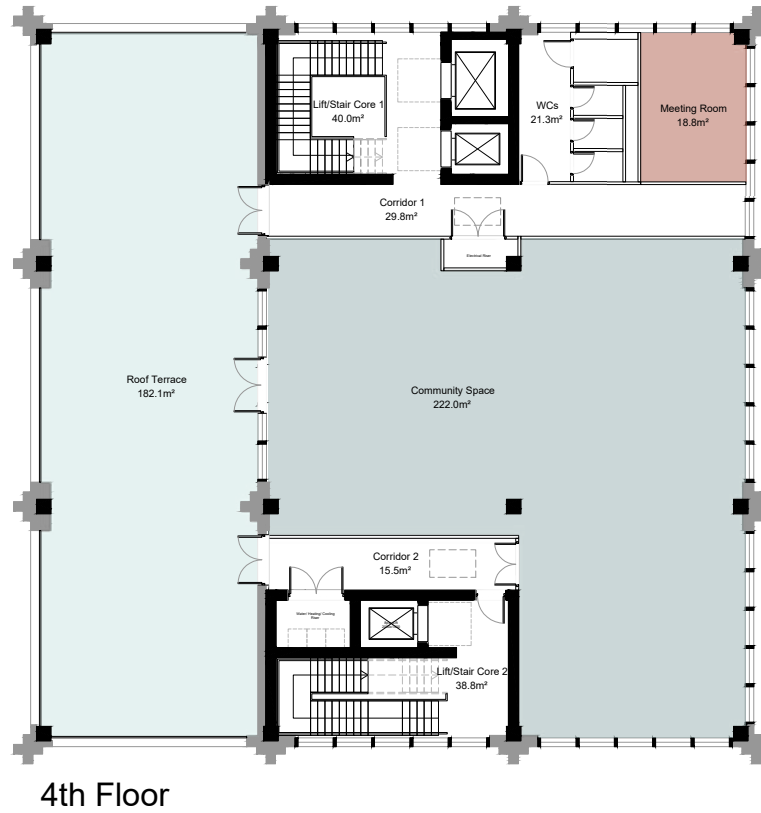
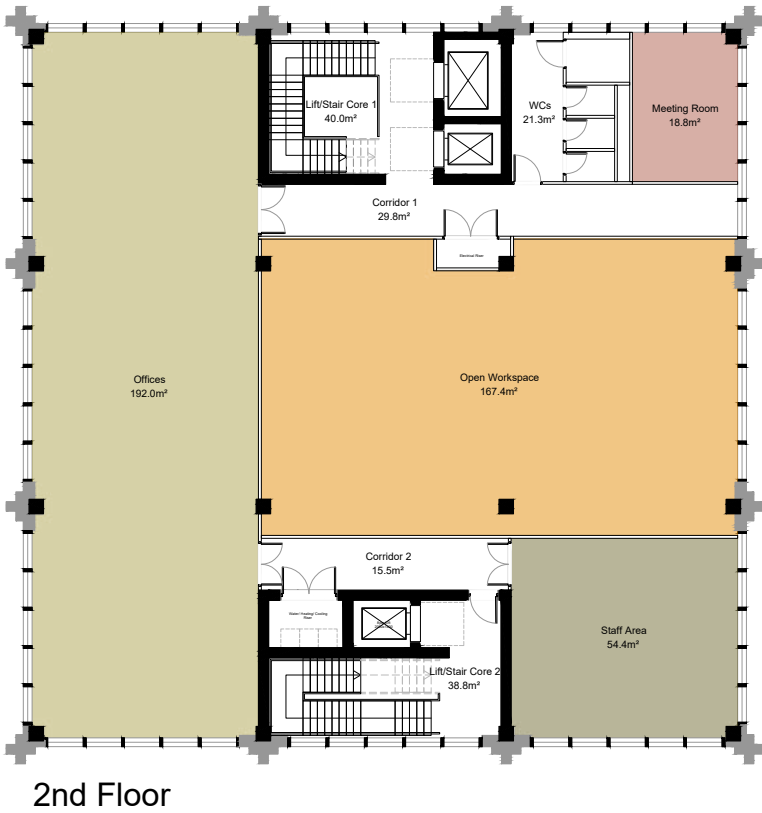
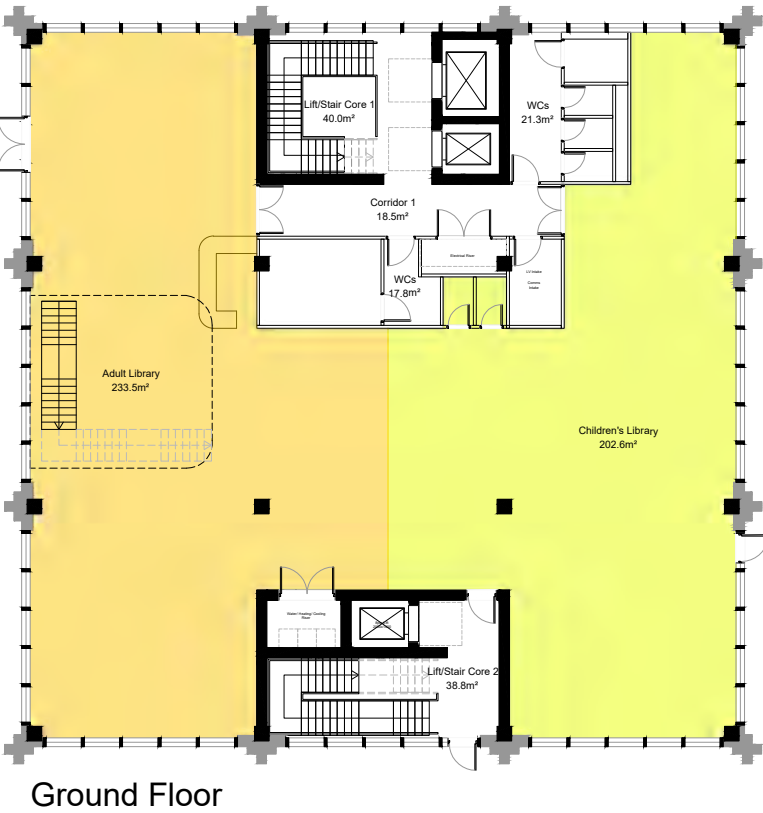
The new buildings will provide:

Library and IT Spaces	Workspace & Meeting Rooms	Community Space
Youth Space	Council Offices	Affordable Homes

A concept sketch for the Community Hub, the building design is evolving

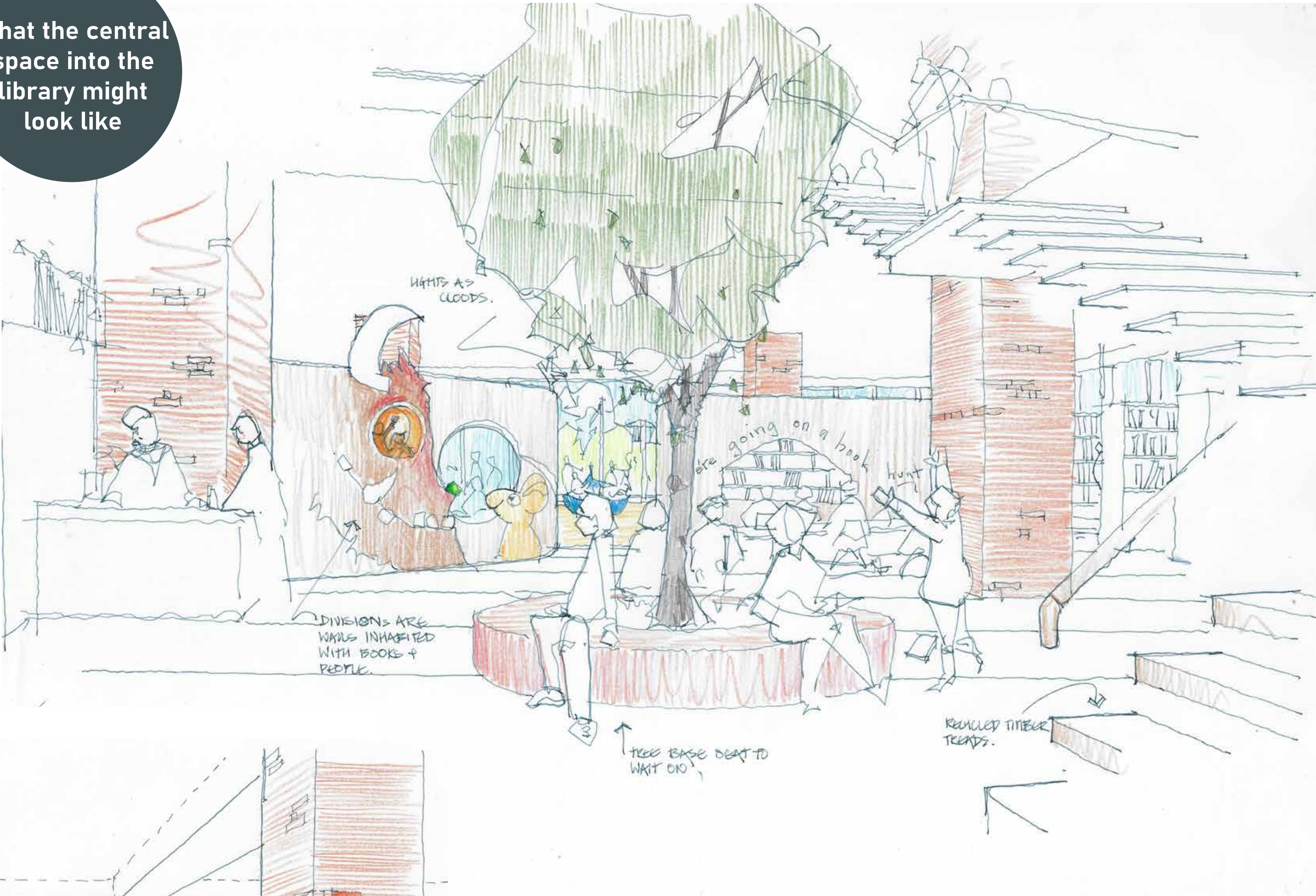


A new gateway building

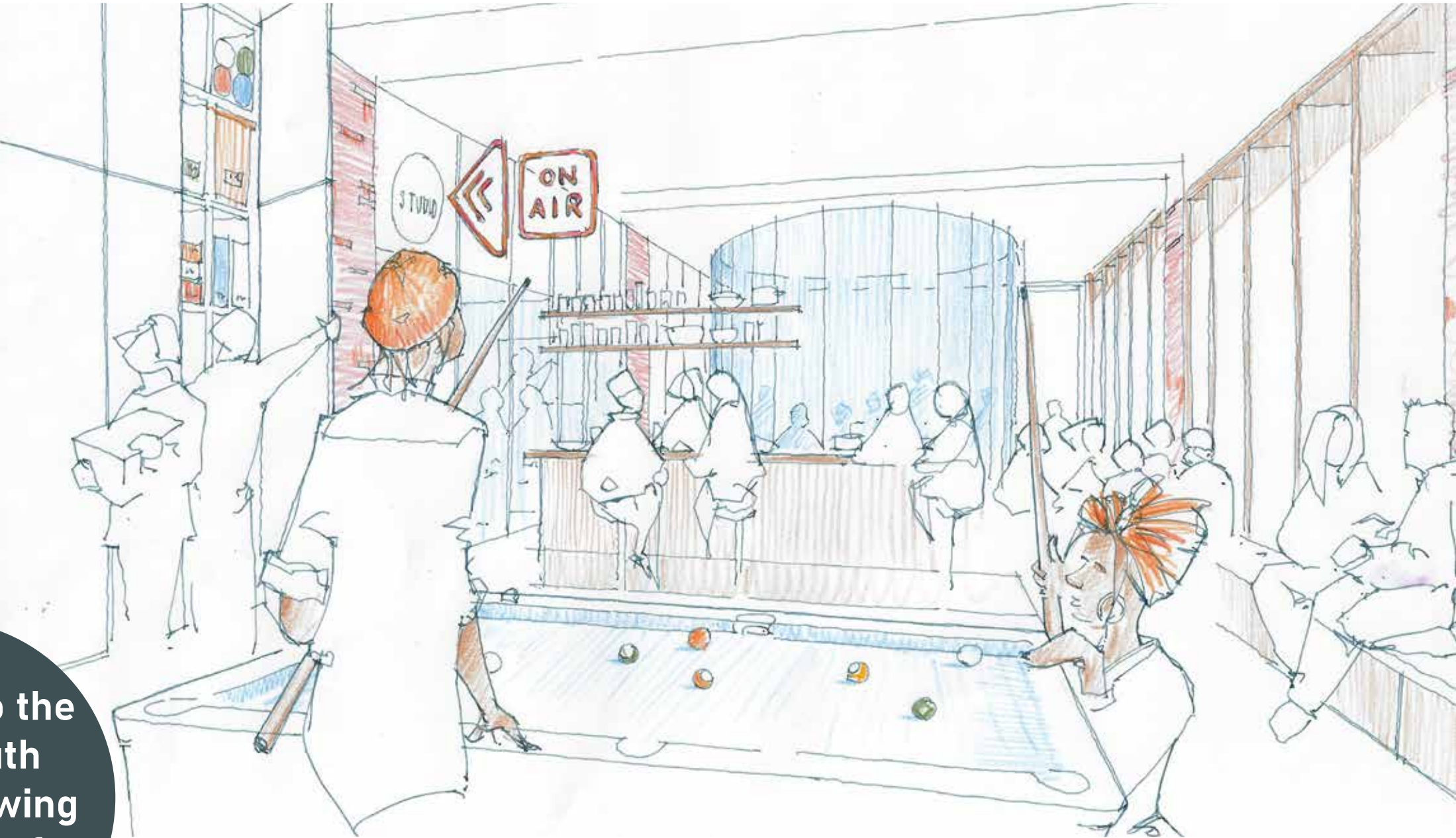
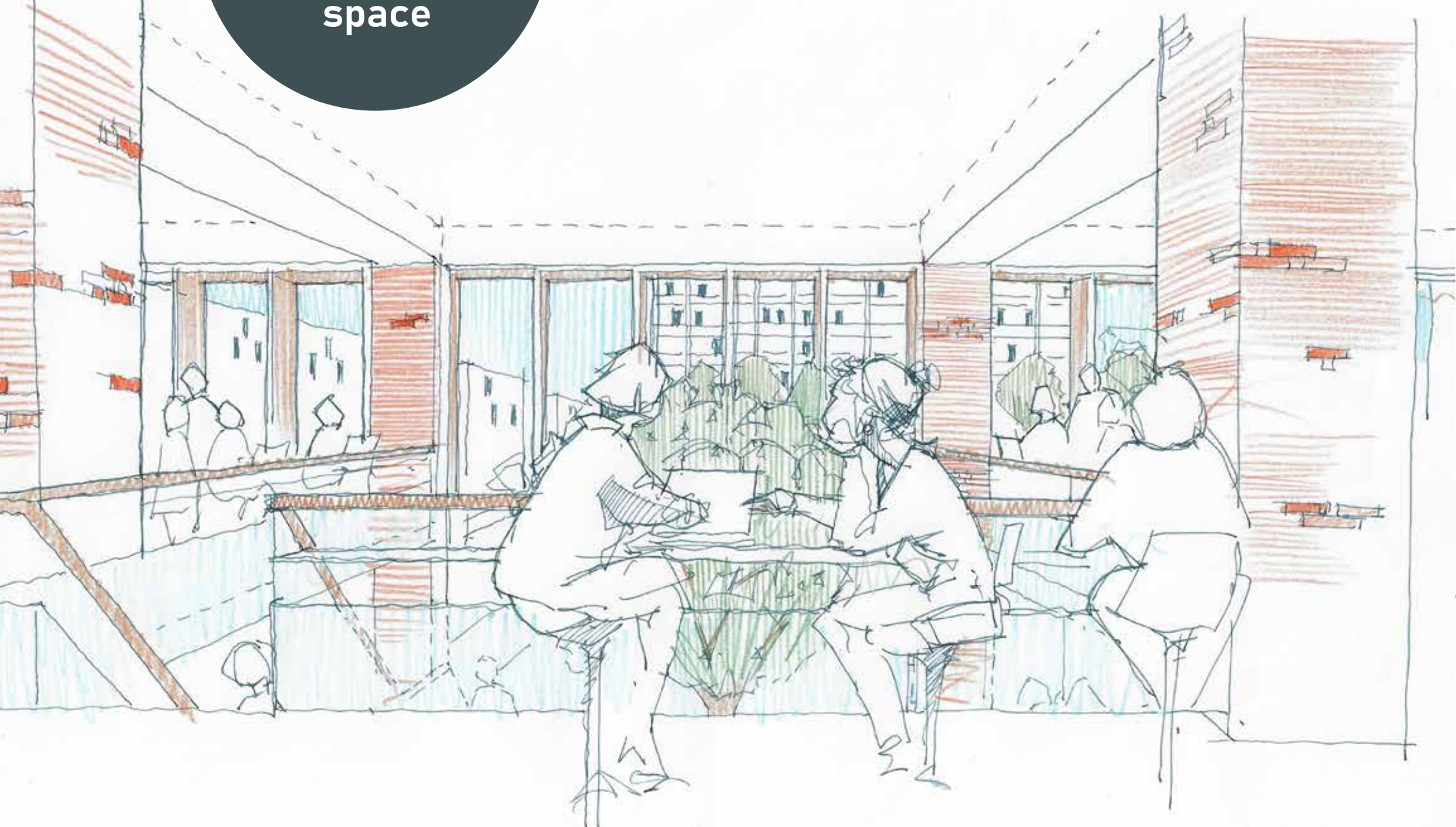


- Adult Library/ IT Space
- Children's Library
- Bookable Meeting Rooms
- Staff Area
- Study Space
- Youth Space
- Community Space
- Council Offices
- Open Workspace
- Roof Terrace

What the central space into the library might look like



Seating overlooking the central entrance space



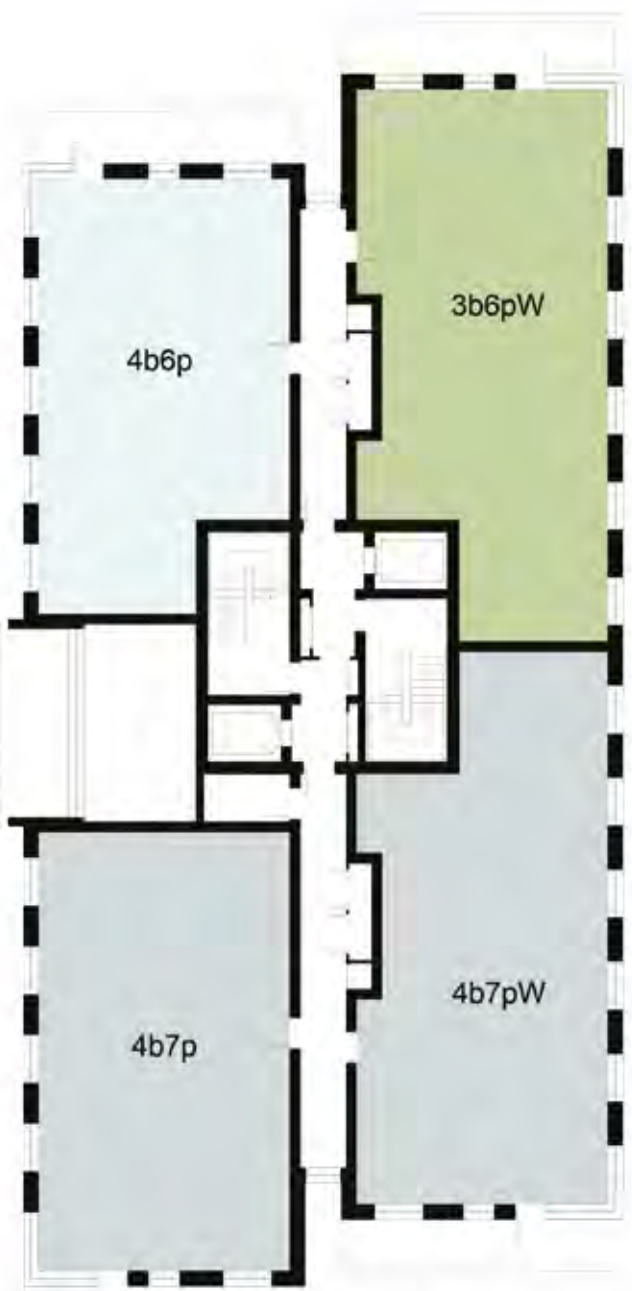
A view into the Base Youth Space showing a variety of activity



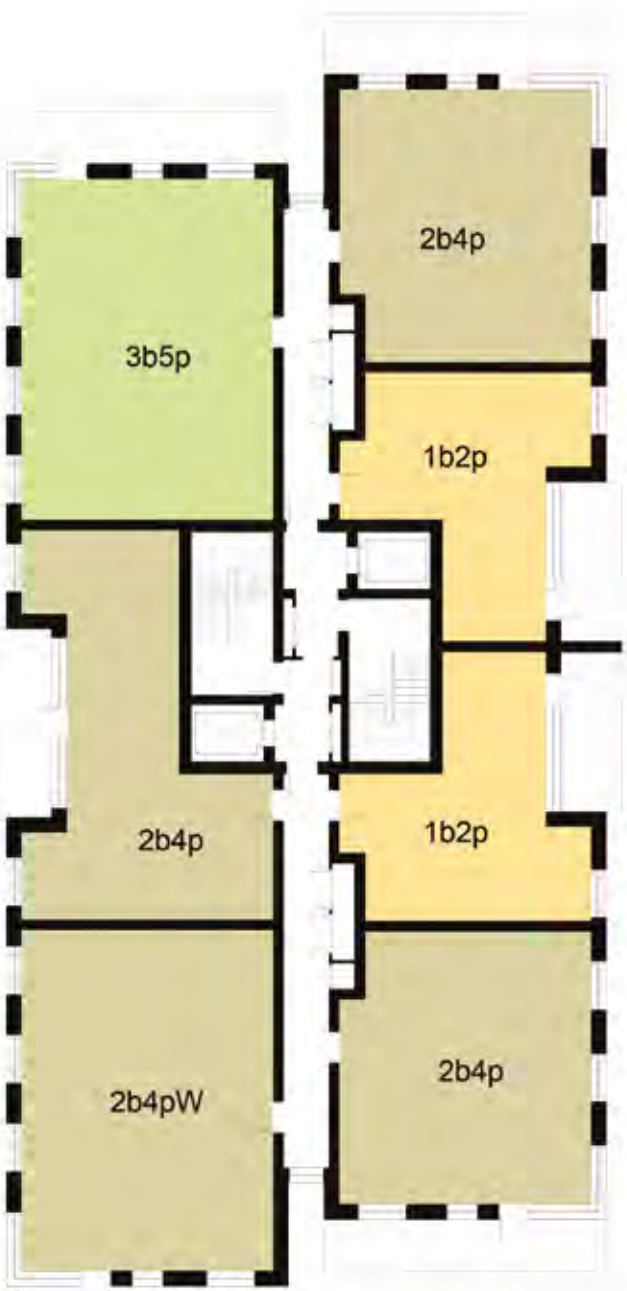
Residential



Ground Floor



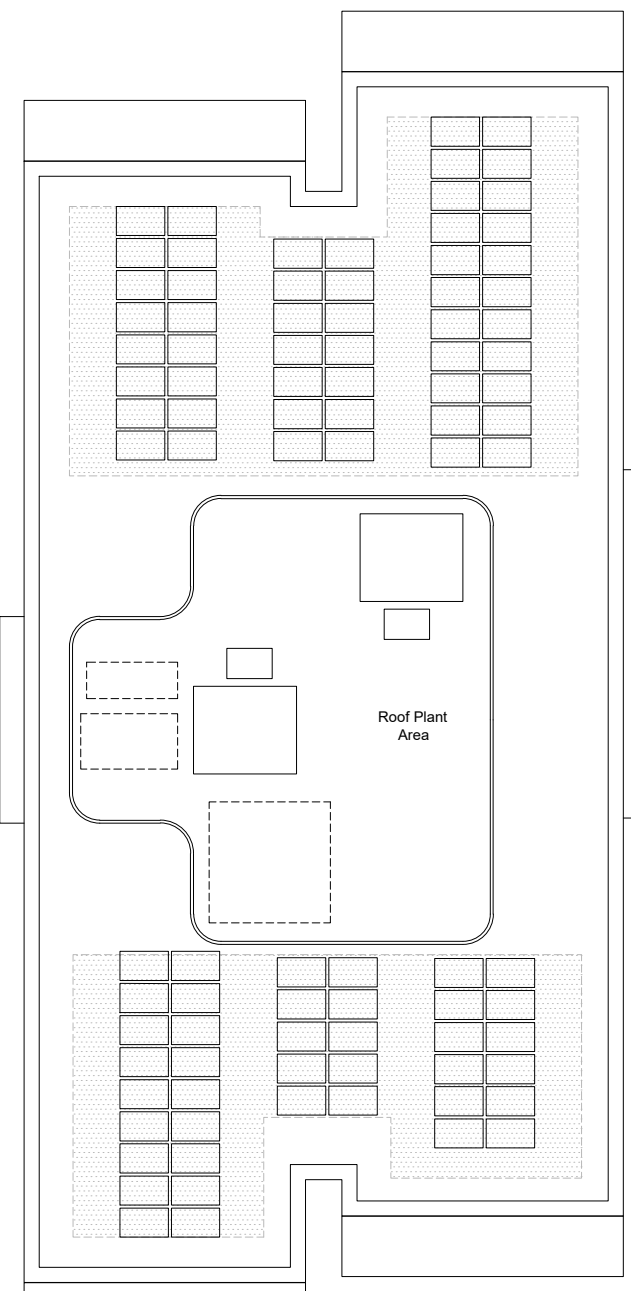
First Floor



Second Floor



Third Floor



Roof Plan

- 1bed/ 2person
- 2bed/ 4person
- 3bed/ 5person
- 3bed/ 6person
- 4bed/ 6person
- 4bed/ 7person
- plant room
- bin store
- cycle store

'W' indicates wheelchair accessible home

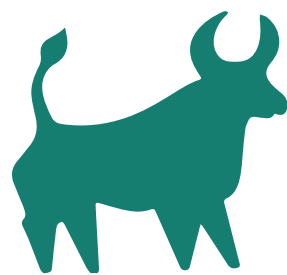
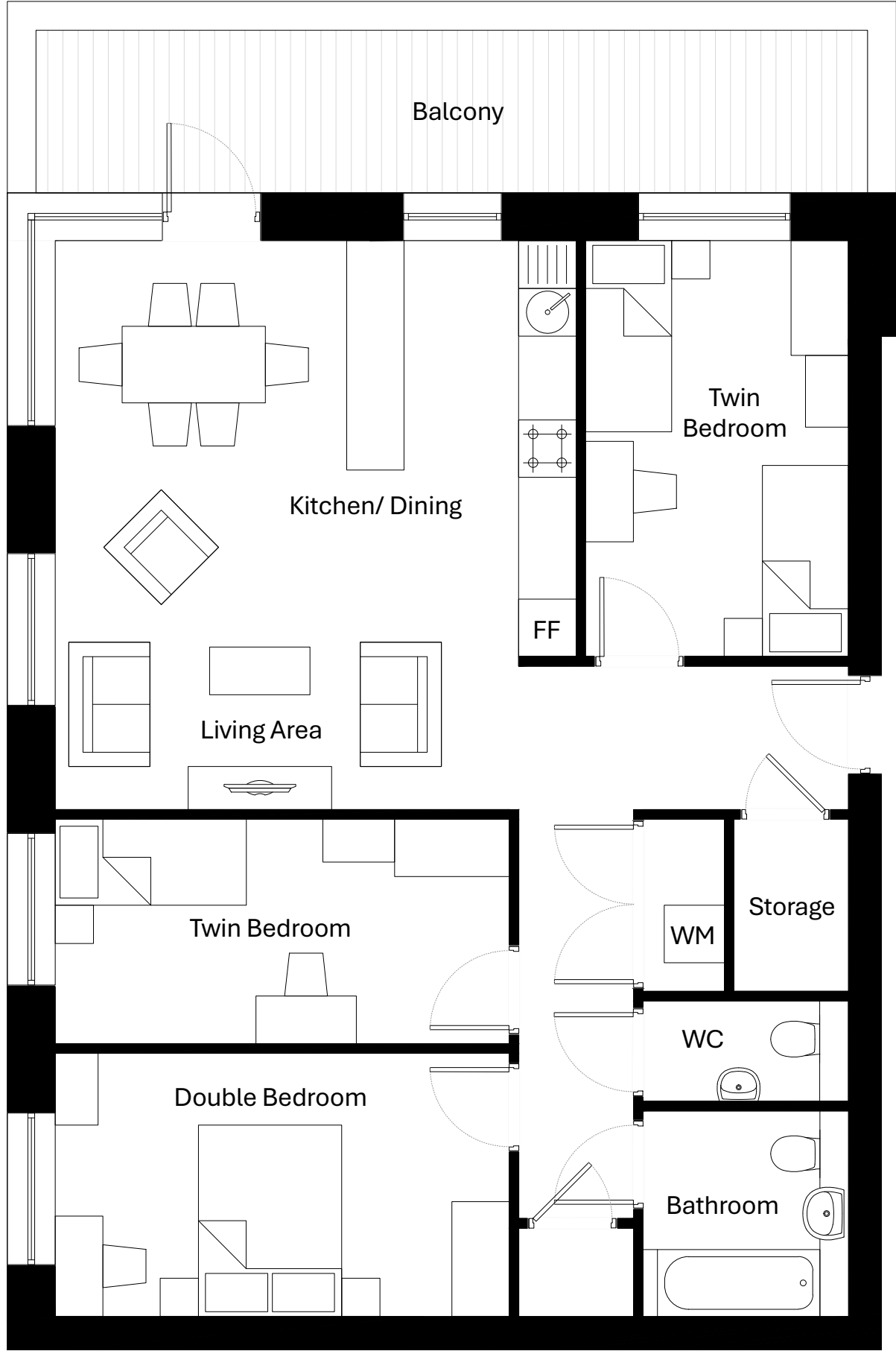
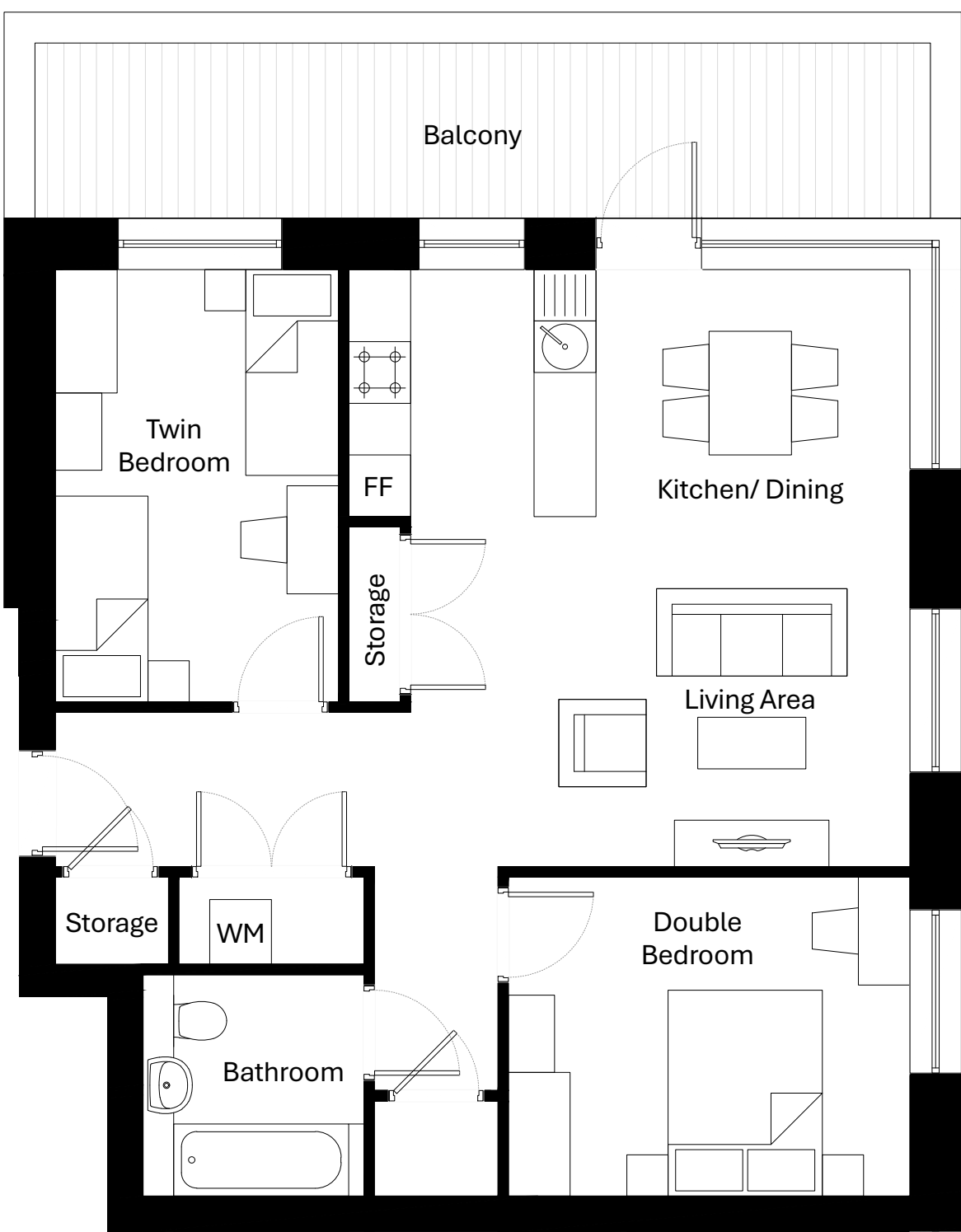
What the homes might look like



1 Bed 2 Person

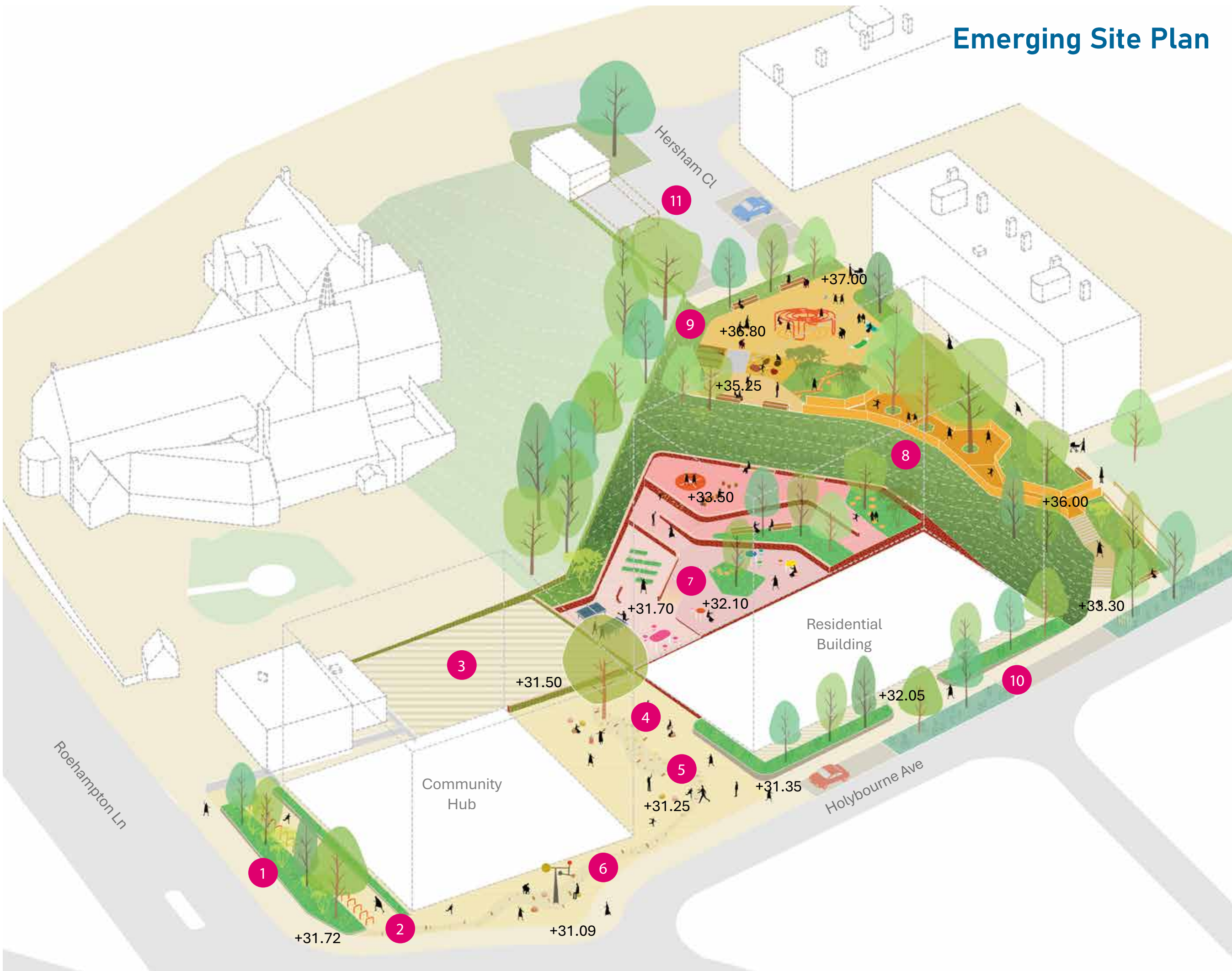
2 Bed 4 Person

3 Bed 5 Person



Landscape Design

- Key
- 1. Gateway planting & buffer
 - 2. External cycle hub
 - 3. Yard/servicing area
 - 4. Feature courtyard tree & drinking fountain
 - 5. Paving tapestry & feature seating
 - 6. Community marker
 - 7. Residential garden & play (private communal)
 - 8. Play tree house
 - 9. Hersham Close play & community space
 - 10. Rain gardens & street trees
 - 11. Rationalised parking & bin storage for Hersham Close



CIVIC



RESIDENTIAL
COMMUNAL



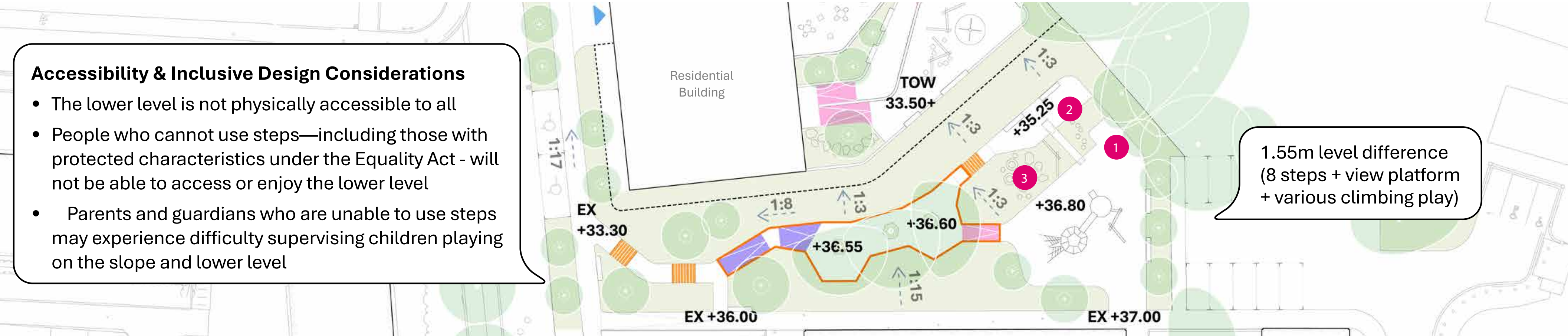
PLAY & COMMUNITY

Play Strategy

Option 1 (Stepped access to lower level)



- KEY
- Entrance
 - Fall/Slope
 - EX +31.35 Existing Level
 - +31.35 Proposed Level
 - Max. 1:21 Slope
 - 1:15 Ramp with Handrails
 - Steps with Handrails
 - Tree House with Railing



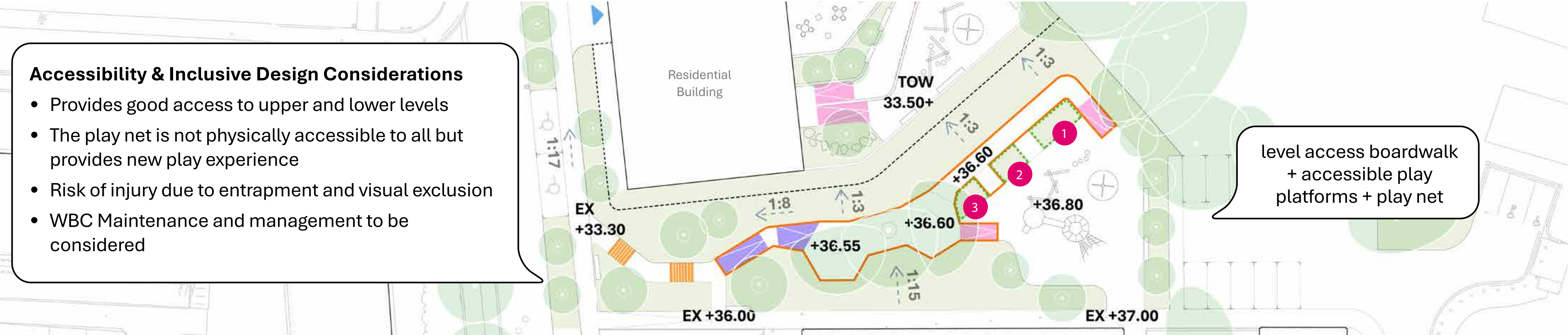
- Accessibility & Inclusive Design Considerations
- The lower level is not physically accessible to all
 - People who cannot use steps—including those with protected characteristics under the Equality Act - will not be able to access or enjoy the lower level
 - Parents and guardians who are unable to use steps may experience difficulty supervising children playing on the slope and lower level

Landscape Design

Option 2 (Deck & net over slope)



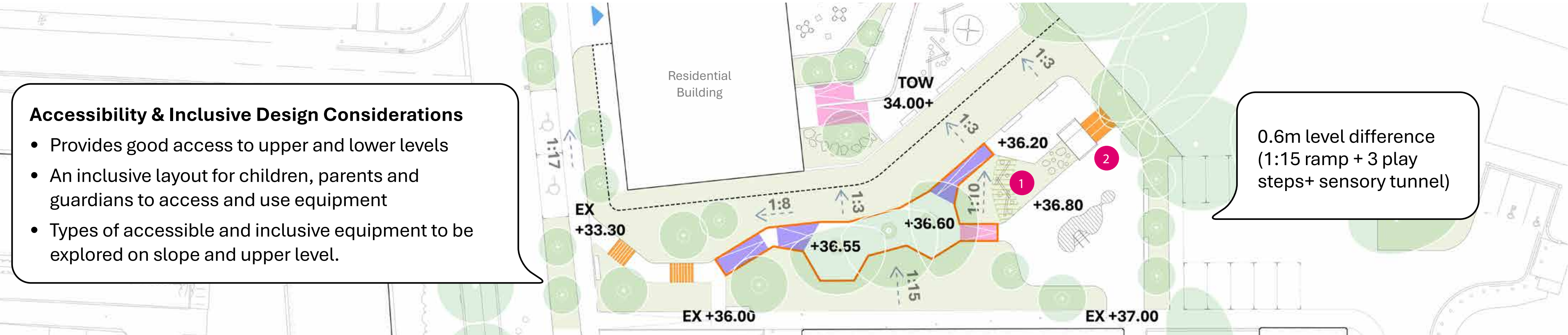
KEY	
	Entrance
	Fall/Slope
EX	Existing Level
+31.35	Proposed Level
	Max. 1:21 Slope
	1:15 Ramp with Handrails
	Steps with Handrails
	Tree House with Railing
	Play Net



Option 3 (Ramped access to lower level)



KEY	
	Entrance
	Fall/Slope
EX	Existing Level
+31.35	Proposed Level
	Max. 1:21 Slope
	1:15 Ramp with Handrails
	Steps with Handrails
	Tree House with Railing



Landscape Design



What would you like to see here?

Community Hub

New Homes

What kind of play/amenity would you like to see here?

